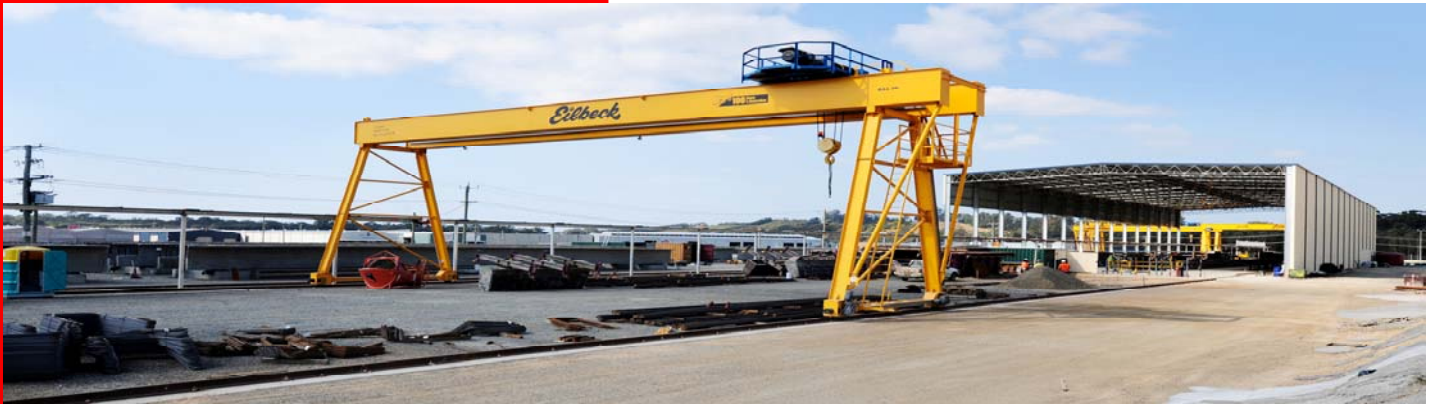


WRS INDUSTRIAL



LEIGHTON CONTRACTORS

Description:

Precast Manufacturing Plant

Location:

Coffs Harbour

Office:

Coffs Harbour

Williams River Steel's contract commenced late 2008 on a 92m long x 28m wide and 13m high building for Leighton Contractors who were constructing a Super T bridge girder precast manufacturing plant at Coffs Harbour. The building is founded on 30, 3m deep piles and comprises of 15 portal frames, however the construction process was altered due to the complexities of the site.

Roof framing was constructed adjacent to the shed and then lifted and moved into position via 2, 50 tonne cranes, as the shed was being erected over an 80m long bed which had to be excavated and built in conjunction with the steel building frame.

In addition to the building, a bus bar, 4m in height has been constructed 150m in length, with columns every 6m. This is to enable power to be supplied to the 4 gantry cranes that will be operating to lift the panels from the ground bed. At the southern end, a similar bus bar system was also installed by Williams River Steel, including a clear span 36m long truss, to enable the bridge girders to be passed under the bar. The truss, once fabricated was shipped in three sections and assembled on site before being lifted into place.



WILLIAMS RIVER STEEL
25 Old Punt Rd, Tomago NSW 2322

P: 02 4985 2000
F: 02 4985 2099

E: wrsteel@wrsteel.com.au
W: www.wrsteel.com.au

AUSTRALIA WIDE
1300 363 121